

## Process description parking area Illomat i2

### Legend:

Boom gate 1: boom gate before weigh station

Boom gate 2: boom gate after weigh station / Illomat

Boom gate 3: boom gate to Logserv parking area

Boom gate 4: boom gate to exit

Boom gate 5: boom gate to exit / loading terminal

### Ablauf

Starting point:

Boom gate 1: open

Boom gate 2: closed

Boom gate 3: closed

Boom gate 4: open

Boom gate 5: closed

### Truck entry

Der LKW fährt bei der Zufahrtsstraße ein, bis er zur 1. Schranke kommt. Dort muss er falls sich noch ein LKW auf der Waage befindet warten (Schranke 1 geschlossen) oder Schranke 1 ist offen und der LKW kann auf die Waage fahren. Schranke 1 **schließt** sich nach einfahrt durch LKW. Alle anderen Schranken bleiben unverändert.

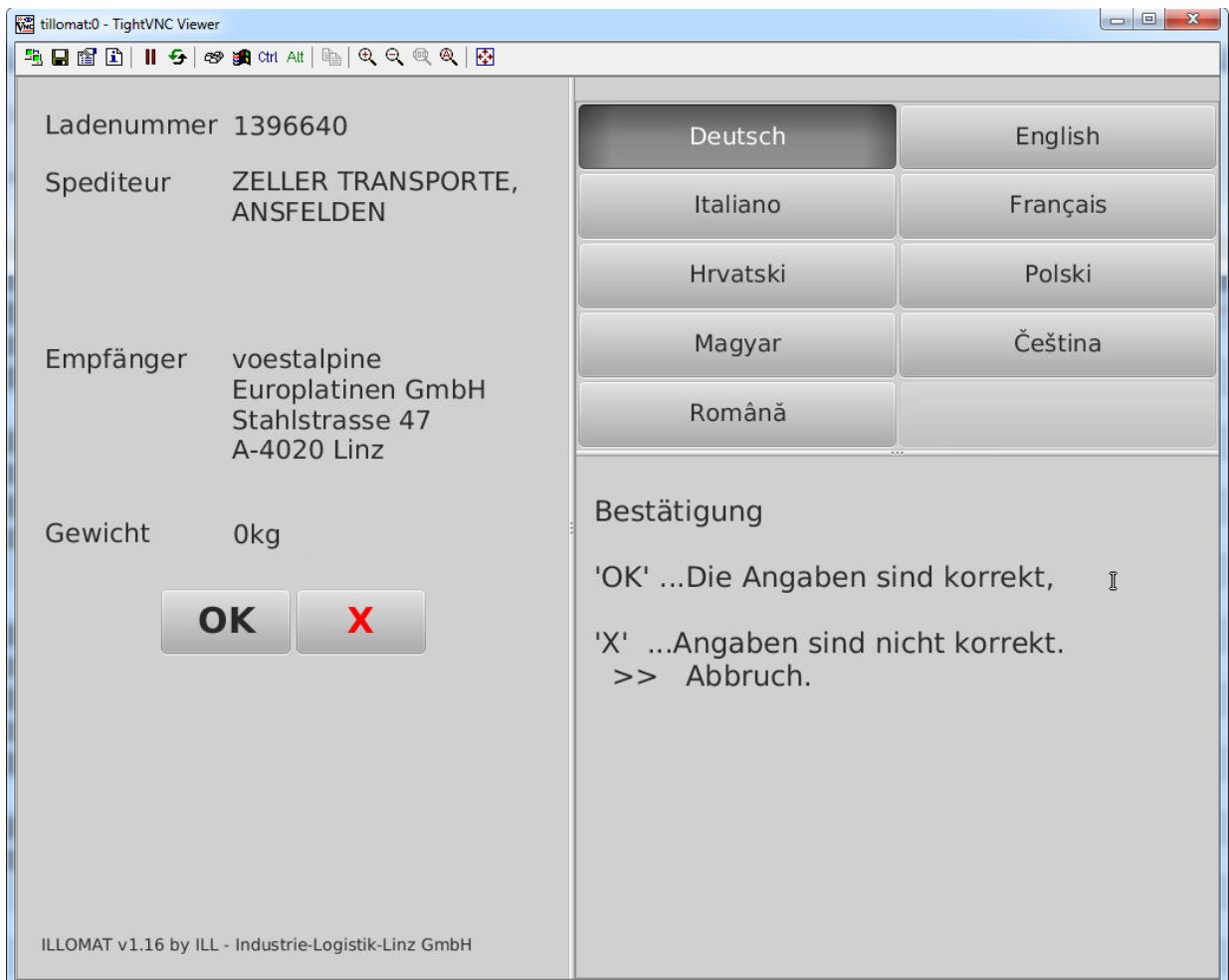
The truck enters via the access road until it reaches the 1. boom gate. There, it must wait if there is another truck on the boom gate (boom gate 1 closed), or if boom gate 1 is open, the truck can drive onto the weigh station. Boom gate 1 closes after the truck enters. All other barriers remain unchanged.

### Entering the Loading Number at the Illomat

Afterward, the driver enters the loading number at the Illomat. Here, various cases can occur:

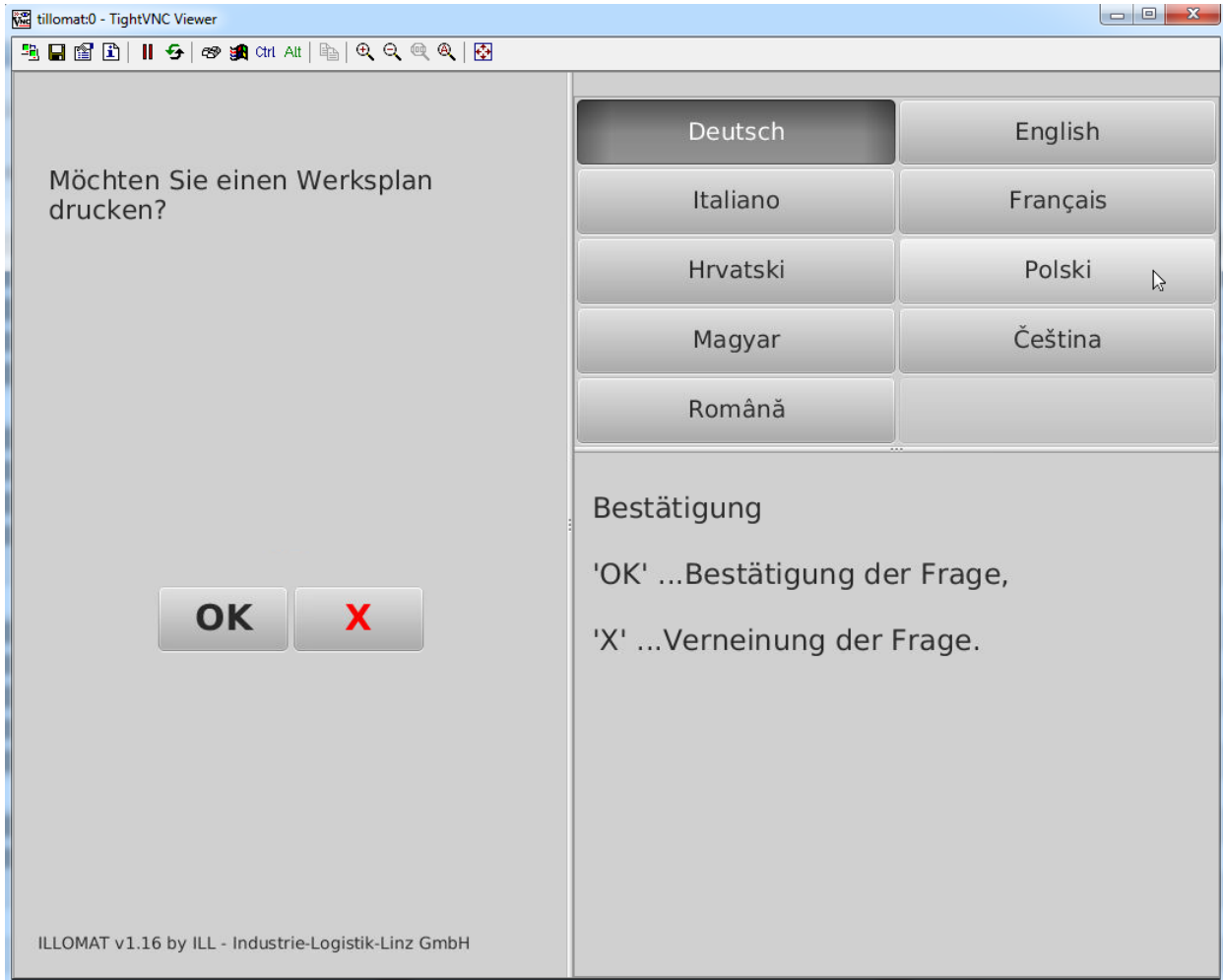
#### **1.) Loading number correct & weight/overload confirmation present:**

The loading number is correct, and now the license plates are automatically captured and

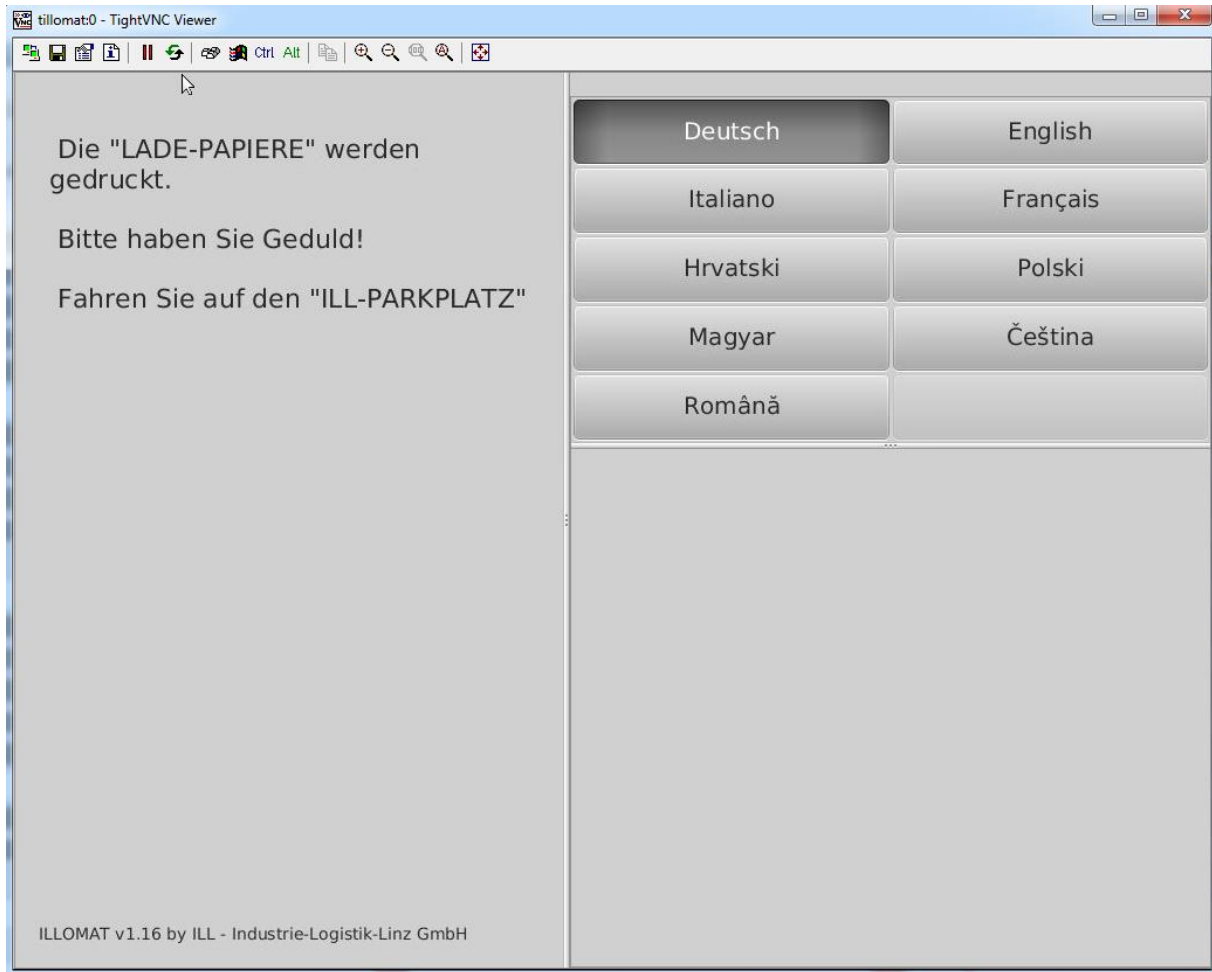


The weight is checked. It is verified whether the weight exceeds 40 tons (tare weight + weight of the load). If the weight is over 40 tons, an overload confirmation must be present, which must be uploaded in advance by the freight forwarder (PDF). The program does not check the content of the PDF! This will be manually checked later in the hall.

The driver now sees his loading data as shown in the example image. If these loading data are correct, the driver presses OK. Then he is asked if he needs a factory layout plan. The driver is also able to change the language:



The driver can now confirm or deny entry. In the next step, the loading papers are printed. Boom gate 2 remains closed.



Shortly after the loading papers have been printed, the following barriers will now open/close:

Boom gate 4 **opens**.

Boom gate 2 **opens**.

Boom gate 3 **opens**.

Now the driver can proceed to the parking area. After passing through, the boom gates close/open as follows:

Boom gate 2 **closes**.

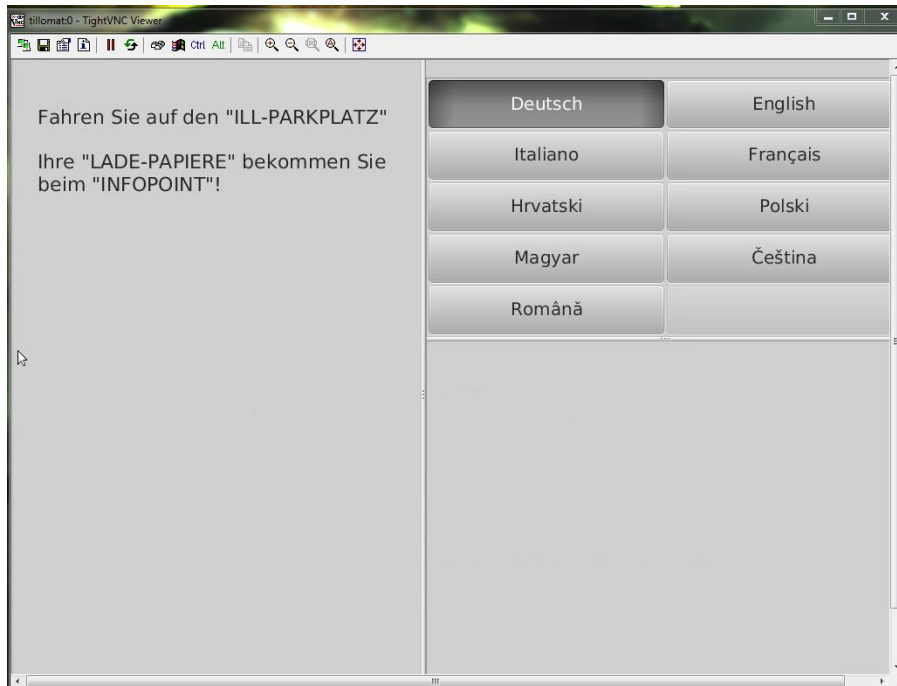
Boom gate 3 **closes**.

Boom gate 4 **opens**.

Boom gate 1 **opens**.

## 2.) Loading number correct, weight over 40 tons, no overload confirmation:

The loading number is correct, now the license plates are automatically captured and the weight is checked. During the weight check, it was determined that the weight exceeds 40 tons. No overload confirmation was uploaded in advance



The driver is now guided to the parking area and must pick up his loading papers at the information point.

Boom gate 4 **closes**.

Boom gate 2 **opens**.

Boom gate 3 **opens**.

The driver drives to the parking lot. After passing through, the boom gates close/open as follows:

Boom gate 2 **closes**.

Boom gate 3 **closes**.

Boom gate 4 **opens**.

Boom gate 1 **opens**.

### 3.) Loading number correct, but loading time

The loading number is correct, but the system has recognized that the loading time was missed.



The truck driver is now directed to the exit.

Boom gate 2 **opens**.

Boom gate 4 is already opened.

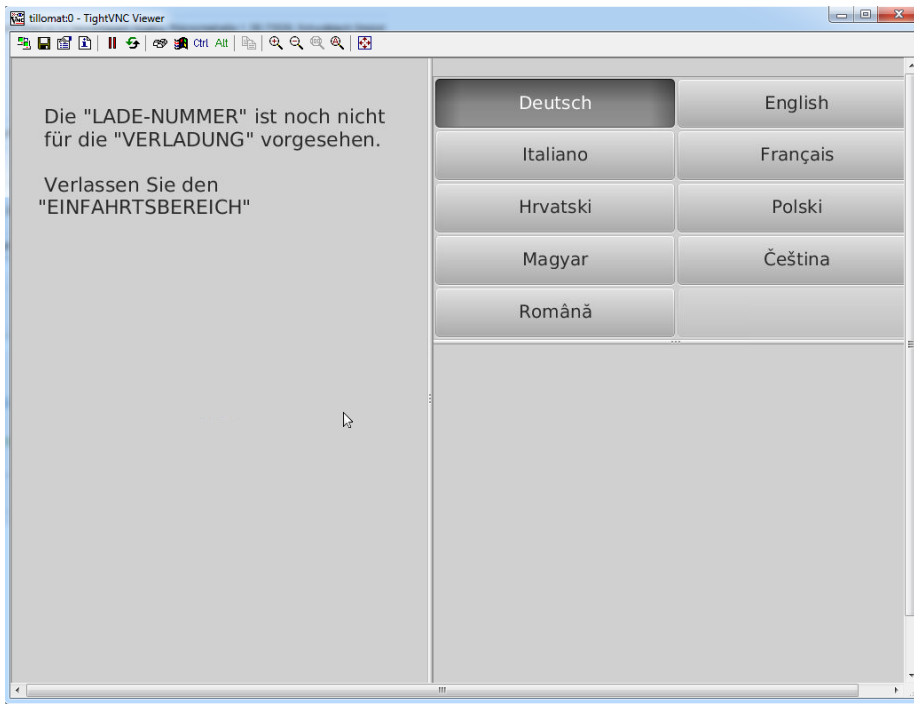
The driver must now leave the entrance area via boom gate 4.

Boom gate 2 **closes**.

Boom gate 1 **opens**.

#### 4.) Loading number correct, loading time only at a later hour (truck driver too early)

The loading number is correct, but the system has recognized that the loading time has not yet been reached. The driver has thus arrived at the Illomat too early.



The truck driver is now directed to the exit and must return to the Illomat at a later time.

Boom gate 2 **opens**.

Boom gate 4 is already opened.

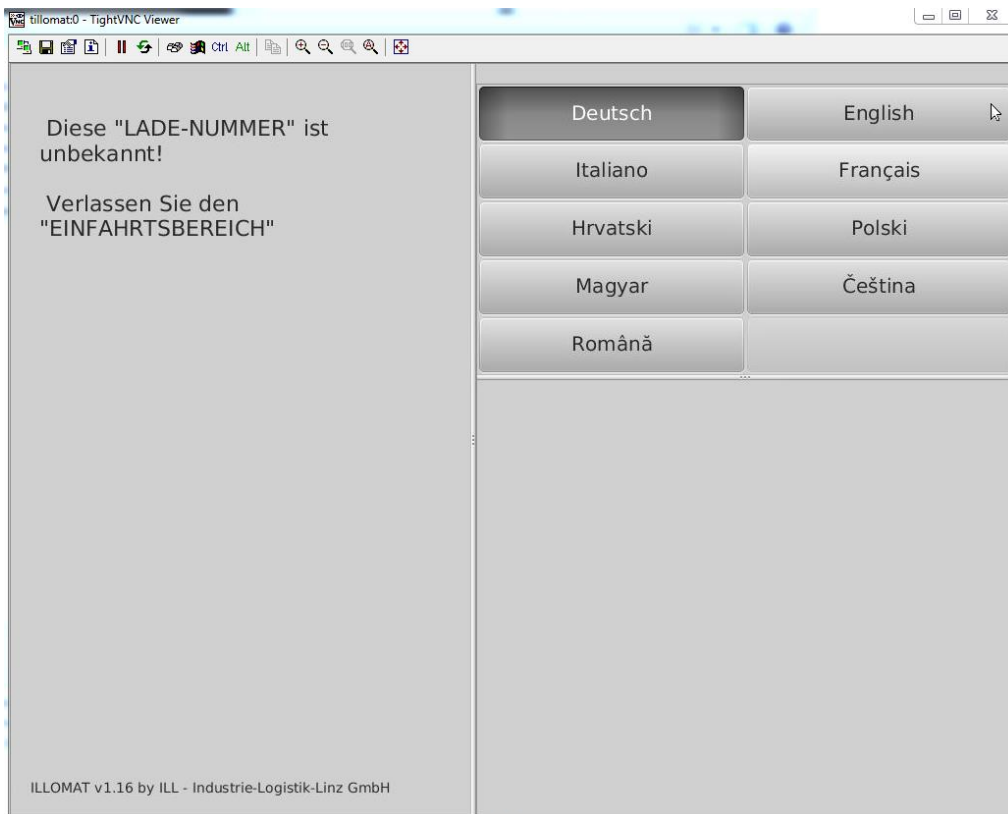
The driver must now leave the entrance area via boom gate 4.

Boom gate 2 **closes**.

Boom gate 1 **opens**.

### 5.) Incorrect/Unknown loading number entered.

The driver enters a completely incorrect/unknown number. He is immediately directed to the exit.



Boom gate 2 **opens**.

Boom gate 4 is already opened.

The driver must now leave the entrance area via boom gate 4.

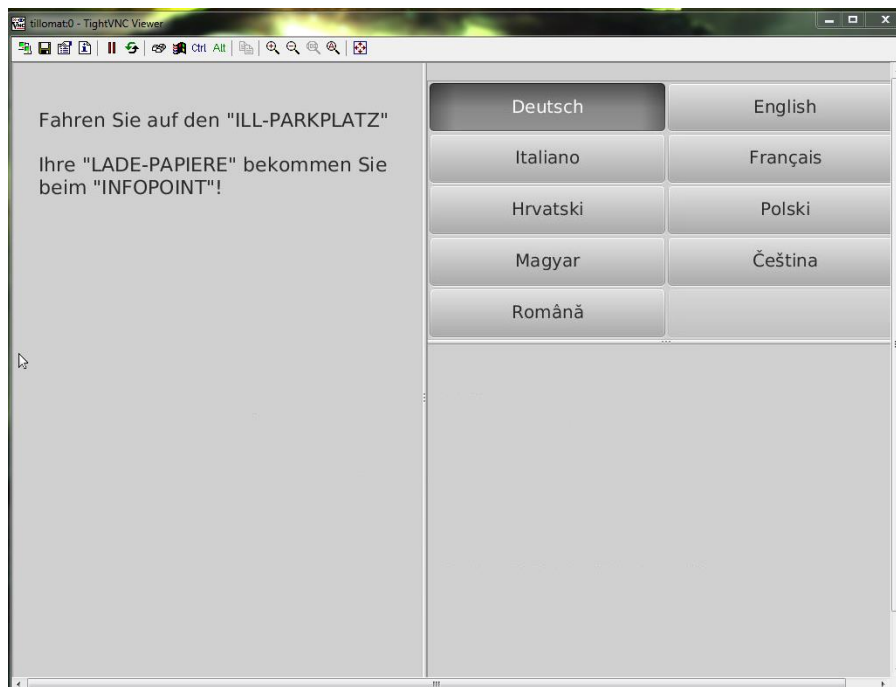
Boom gate 2 **closes**.

Boom gate 1 **opens**.



**6.) Loading number correct / License plates not recognized, do not match the entry in the system.**

The driver enters his loading number at the Illomat (as described above). During the automatic check, one of the license plates is not recognized, or the license plates do not match the data previously entered into the system by the freight forwarder.



The driver is now guided to the parking area and must pick up his loading papers at the information point.

Boom gate 4 **closes**.

Boom gate 2 **opens**.

Boom gate 3 **opens**.

The driver now drives to the parking lot. After passing through, the barriers close/open as follows:

Boom gate 2 **closes**.

Boom gate 3 **closes**.

Boom gate 4 **opens**.

Boom gate 1 **opens**.

### Waiting position at the parking area.

The driver is now at the parking area and must pay attention to the information board. If more data from the driver is needed, or if one of the errors described above occurred (license plate incorrect/overload confirmation not present), then 'Infopop' will be displayed on the information board. This informs the driver that he must go to the information point to receive his loading papers.

The loading number is displayed on the display board, and a traffic light system regulates the transit.

Red = the driver must wait

Green = the driver can leave the parking lot and drive to the loading area.

### Enter the loading number at the exit terminal (number pad)



Schaltet die Anzeigetafel mit der Verladenummer des LKW-Fahrers auf grün um kann er nun den Parkplatz verlassen. Um den Parkplatz verlassen zu können muss er nun zur Schranke 5 vorfahren. Dort muss er auf einem Nummernblock seine Verladenummer eingeben (System vermerkt dass der LKW den Parkplatz verlassen hat und sich auf dem Weg zur Verladestation befindet) um den Parkplatz zu verlassen.

When the display board with the truck driver's loading number turns green, he can now leave the parking area. To be able to leave the parking lot, he must now drive up to boom gate 5. There, he must enter his loading number on a number pad (the system notes that the truck has left the parking lot and is on its way to the loading zone) to leave the parking area.

Boom gate 5 **opens**.

Truck driver leaves the parking area.

Boom gate 5 **closes**.

### Transit to the loading zone